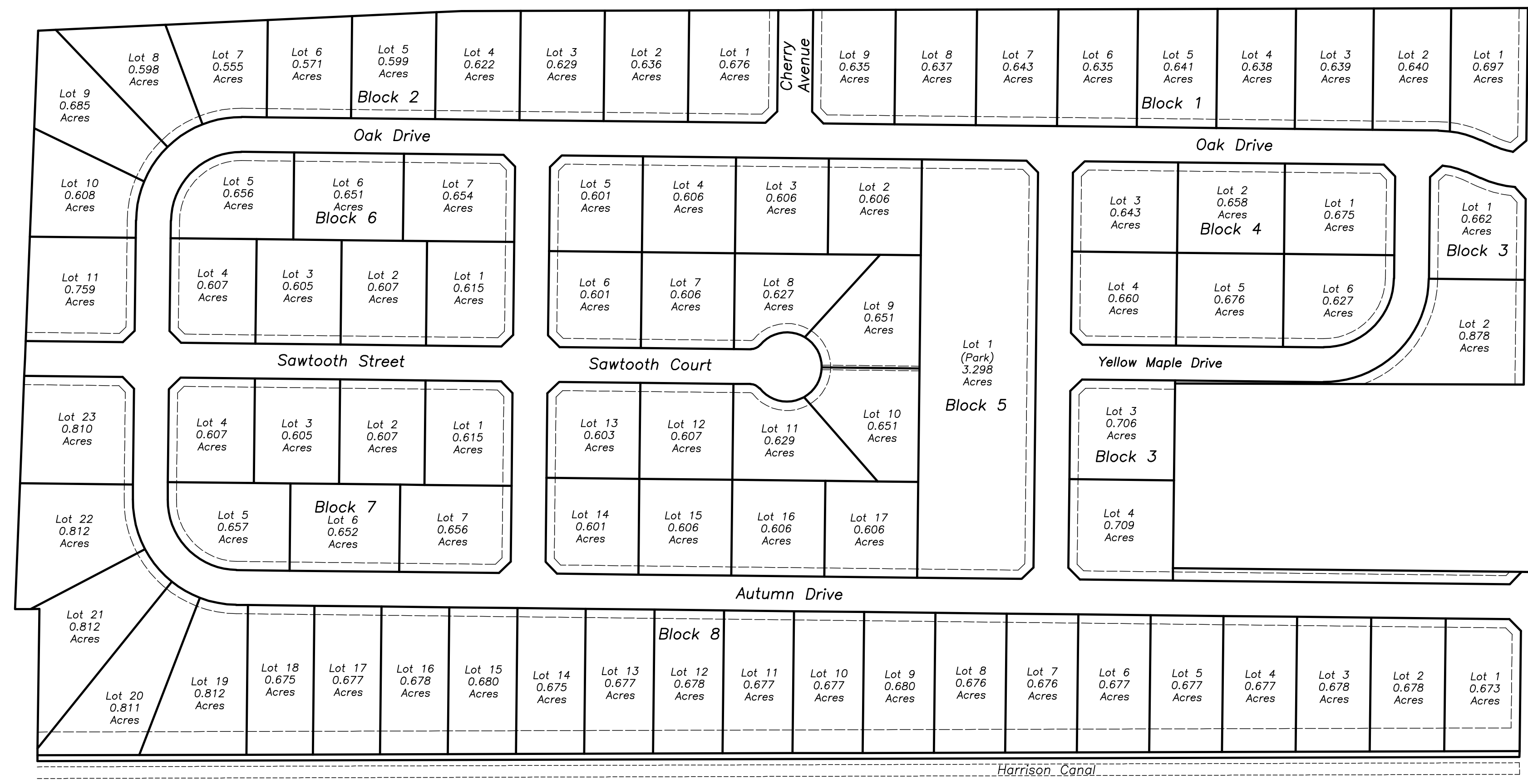
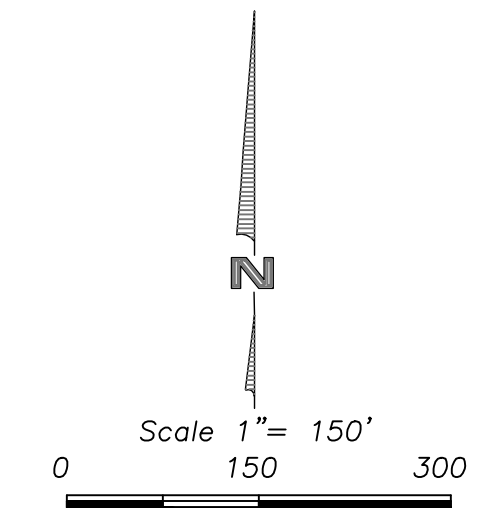


AUTUMN HEIGHTS SUBDIVISION DIVISION NO. 1, FIRST AMENDED,  
 BEING A REPLAT OF AUTUMN HEIGHTS DIVISION NO. 1,  
 WITHIN THE S 1/2 OF THE SE 1/4 OF SECTION 34, TOWNSHIP 4 NORTH,  
 RANGE 38 EAST, B.M.  
 JEFFERSON COUNTY, IDAHO



3700 East - County Road

County Line Road