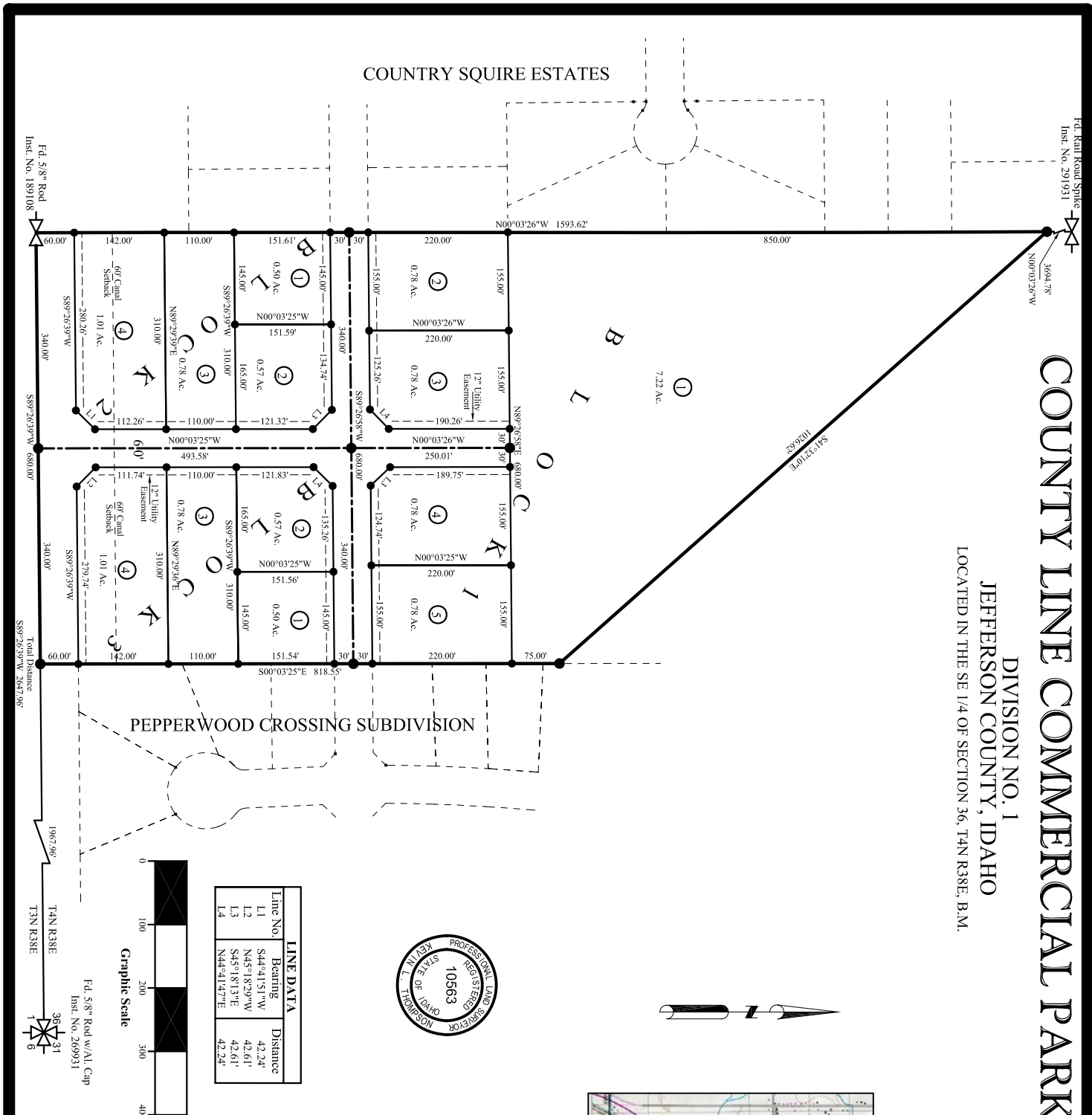


COUNTY LINE COMMERCIAL PARK

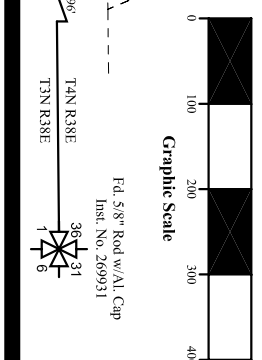
DIVISION NO. 1
JEFFERSON COUNTY, IDAHO
LOCATED IN THE SE 1/4 OF SECTION 36, T4N R38E, B.M.



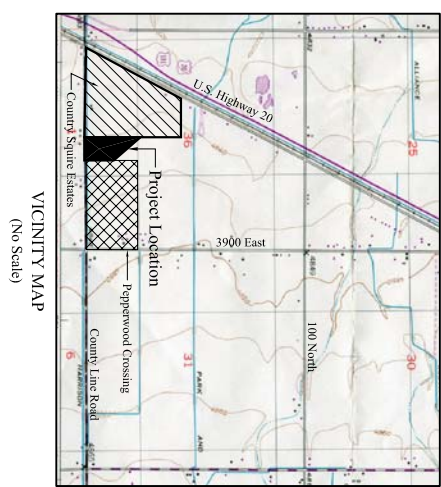
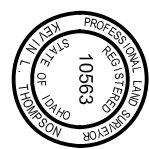
Fd. 5.8\" Road
Inst. No. 189108

Fd. 5.8\" Road w/Al. Cap
Inst. No. 269931

Fd. Rail Road Spike
Inst. No. 291931



Line No.	Bearing	Distance
L1	S44°41'51\" W	42.24'
L2	N45°18'29\" W	42.61'
L3	S45°18'13\" E	42.61'
L4	N44°41'47\" E	42.24'



FINAL PLAT	
LOCATED IN THE SE 1/4 OF SECTION 36, TOWNSHIP 4 NORTH, RANGE 38 EAST, JEFFERSON COUNTY, IDAHO	
Project Name:	Jim Bernard
Job Number:	2004-53
CoGo File:	BernardJim(CntyRoad)
Date:	March 20, 2006
Surveyor:	K.L.T.
Drawn By:	K.L.T.
Scale:	1\" = 100'
Sheet:	2
Of:	2

TE THOMPSON ENGINEERING, INC.
CONSULTING ENGINEERS
RIGBY, IDAHO 83442

SURVEYOR
Kevin L. Thompson, P.L.S.
154 East Main Street
Rigby, ID 83442
(208) 745-8771

LAND DEVELOPER
Jim Bernard
3894 East 200 North
Rigby, ID 83442
(208) 745-9799

ACREAGE
Total Subdivision: 18.83 Acres
13 Lots: 16.06 Acres
Dedicated County Road: 2.77 Acres

LEGEND
● Set 5.8\" X 30\" Iron Rod w/Cap No. 10563
● Set 1.2\" X 24\" Iron Rod w/Cap No. 10563
--- Adjacent Property Line
- - - 12\" Utility Easement